



# DG12 & DG13 SUBDIVISION SCHEME

- KEY
- Proposed single lot
  - Proposed superlots
  - Open space
  - SEA
  - Overhead transmission lines and blowouts (retained)
  - Pylon (retained)
  - Stage boundary
  - Stream offset  
20m - Esplanade reserve  
10m - Drainage reserve
  - National Grid Yard  
(12m centre of powerline and pylon)
  - National Grid Yard  
(no longer applicable as powerlines were removed)

Total yield:

DG 11D - 5 Lots

DG 12 - 88 Lots  
- 1 Superlots

DG 13 - 62 Lots  
- 3 Superlots

HARRISON  
GRIERSON

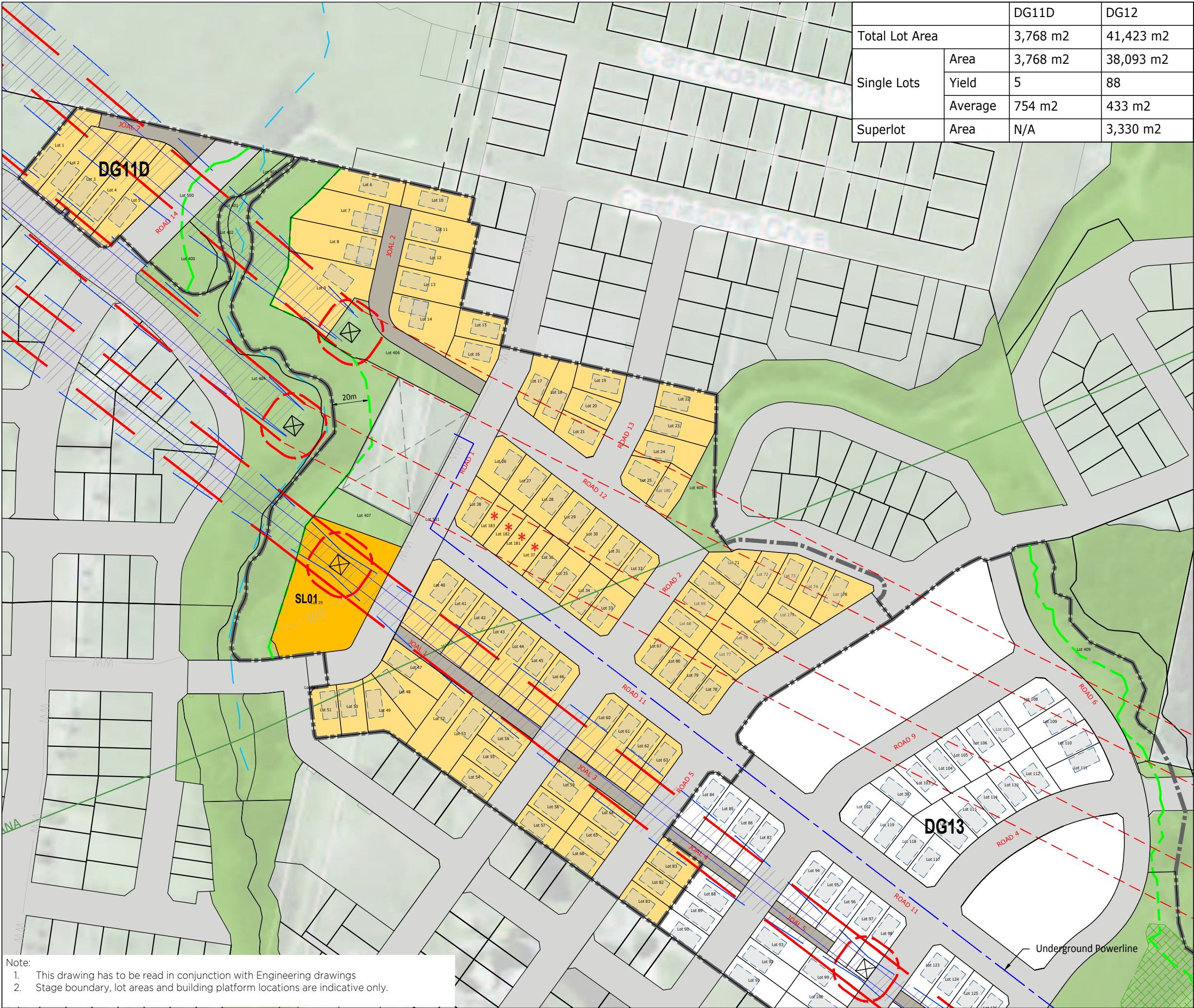
DG 11D, 12 & 13

HUGH GREEN

Project: 1050-142875-01  
Date: 21 January 2020  
Drawing No: 142875-UD-100  
Status: S127  
Scale: 1:3000 - A3  
Revision: D

This document and design remains the property of Harrison Grierson Consultants Limited. No liability shall be accepted for unauthorised use. This concept is subject to further investigations into Planning, Surveying and Engineering feasibility. This document may be derived from inaccurate source information.





		DG11D	DG12
Total Lot Area		3,768 m2	41,423 m2
Single Lots	Area	3,768 m2	38,093 m2
	Yield	5	88
	Average	754 m2	433 m2
Superlot	Area	N/A	3,330 m2

# DG12 SUBDIVISION SCHEME

- KEY
- Proposed single lot
  - Proposed superlot
  - Open space
  - SEA
  - Overhead transmission lines and blowouts (retained)
  - National Grid Yard (12m from centre of powerline and pylon)
  - National Grid Yard (no longer applicable as powerlines were removed)
  - Pylon (retained)
  - Stage boundary
  - Stream offset  
20m - Esplanade reserve  
10m - Drainage reserve
  - Typical 8 x 15m building platform
  - \* Comprehensive dwellings layout plans to be provided by NZHF

HARRISON  
GRIERSON

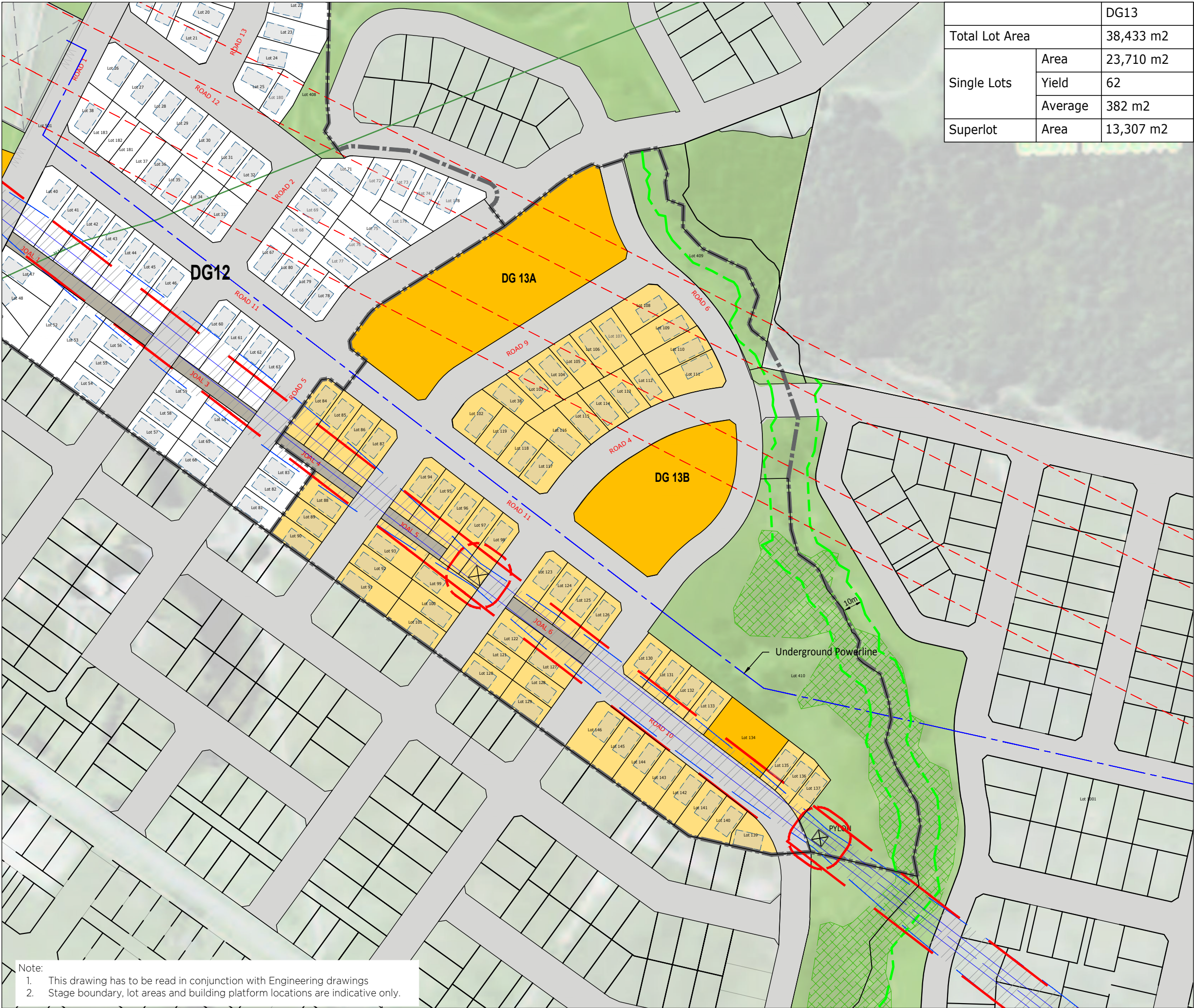
DG 11D, 12 & 13

HUGH GREEN

Project: 1050-142875-01  
Date: 21 January 2020  
Drawing No: 142875-UD-101  
Status: S127  
Scale: 1:2000 - A3  
Revision: D

This document and design remains the property of Harrison Grierson Consultants Limited. No liability shall be accepted for unauthorised use. This concept is subject to further investigations into Planning, Surveying and Engineering feasibility. This document may be derived from inaccurate source information.





DG 13  
SUBDIVISION  
SCHEME

- KEY
- Proposed single lot
  - Proposed superlots
  - Open space
  - SEA
  - Overhead transmission lines and blowouts (retained)
  - National Grid Yard (12m from centre of powerline and pylon)
  - National Grid Yard (no longer applicable as powerlines were removed)
  - Pylon (retained)
  - Stage boundary
  - Stream offset  
20m - Esplanade reserve  
10m - Drainage reserve
  - Typical 8 x 15m building platform

HARRISON  
GRIERSON

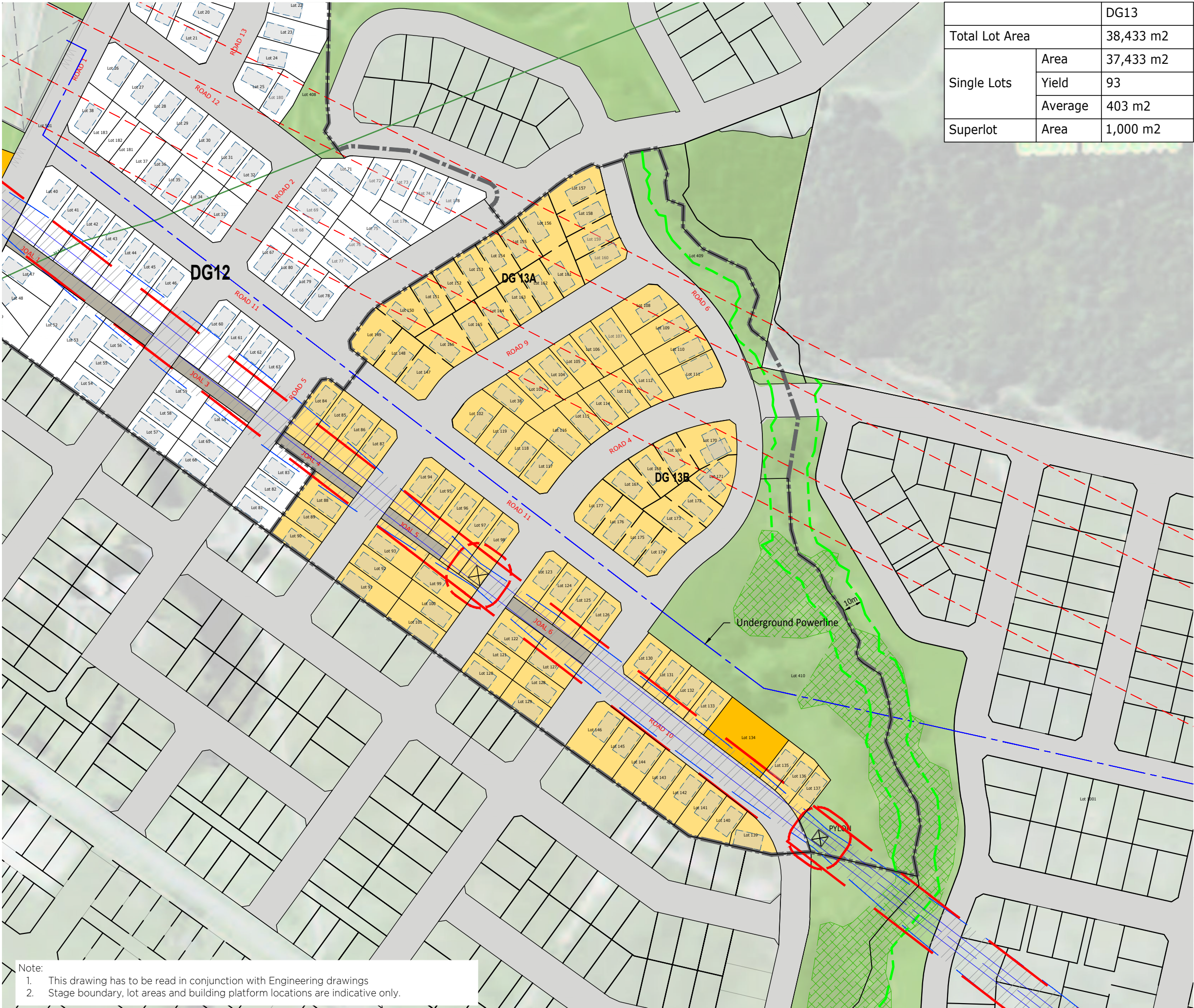
DG 11D, 12 & 13

HUGH GREEN

Project: 1050-142875-01  
Date: 21 January 2020  
Drawing No:142875-UD-102  
Status: S127  
Scale: 1:2000 - A3  
Revision: D

- Note:
- This drawing has to be read in conjunction with Engineering drawings
  - Stage boundary, lot areas and building platform locations are indicative only.





# DG 13 POTENTIAL SUPERLOTS SUBDIVISION SCHEME

- KEY
- Proposed single lot
  - Proposed superlot
  - Open space
  - SEA
  - Overhead transmission lines and blowouts (retained)
  - National Grid Yard (12m from centre of powerline and pylon)
  - National Grid Yard (no longer applicable as powerlines were removed)
  - Pylon (retained)
  - Stage boundary
  - Stream offset  
20m - Esplanade reserve  
10m - Drainage reserve
  - Typical 8 x 15m building platform

**HARRISON  
GRIERSON**

DG 11D, 12 & 13

HUGH GREEN

Project: 1050-142875-01  
Date: 21 January 2020  
Drawing No: 142875-UD-103  
Status: S127  
Scale: 1:2000 - A3  
Revision: D

This document and design remains the property of Harrison Grierson Consultants Limited. No liability shall be accepted for unauthorised use. This concept is subject to further investigations into Planning, Surveying and Engineering feasibility. This document may be derived from inaccurate source information.